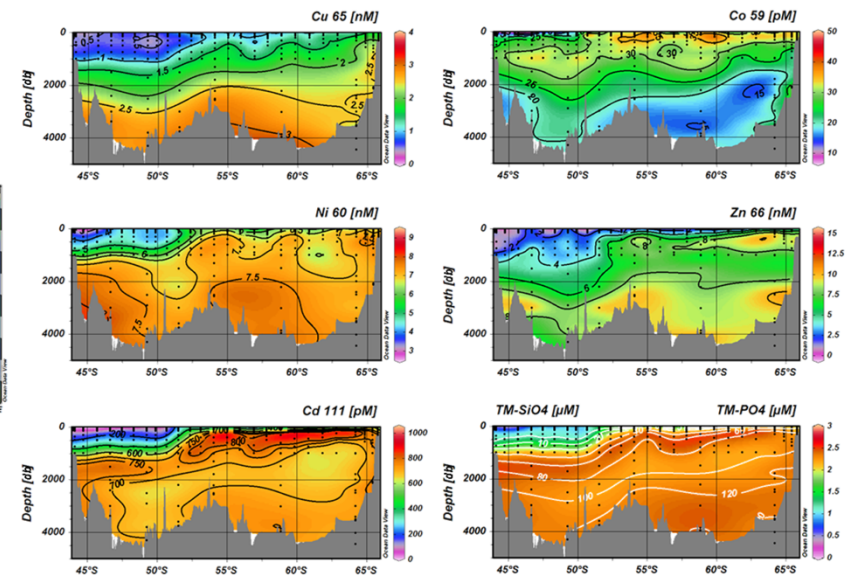
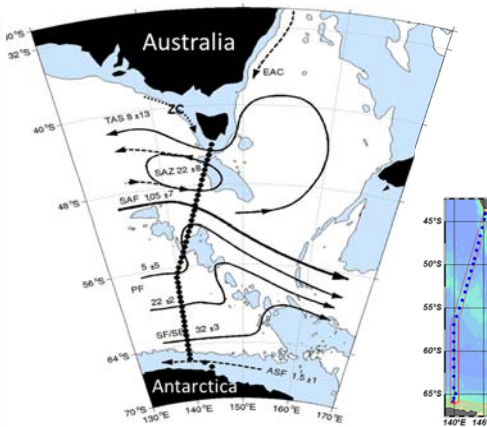
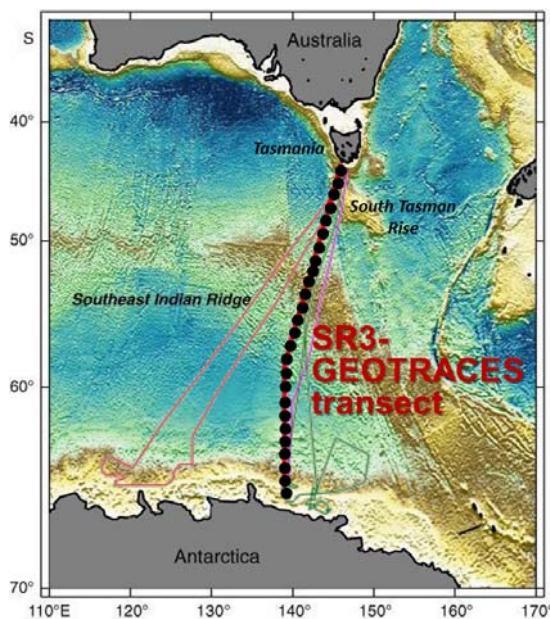


# SR3-GEOTRACES repeat section

- Voyage IN2018\_V01, RV *Investigator*, GEOTRACES GI08
- Project: “Detecting Southern Ocean change from repeat hydrography, deep Argo and trace element biogeochemistry”
- Depart Hobart, 11 January 2018, Return Hobart 21 February 2018
- Chief Scientist: Steve Rintoul, GEOTRACES PI: Andrew Bowie
- Voyage track: SR3 repeat line from Tasmania to Antarctica (~140oE)
- Previous occupation: GEOTRACES-IPY section (GIPY6) ran by Australia (2008)
- Funding: Antarctic Climate and Ecosystems CRC



## SR3-GEOTRACES repeat section

### GEOTRACES section criteria:

- √ Full-depth water column TEI measurements
  - ▶ 27 stations across 22o latitude, 16 full water column
- √ Average station-spacing for full depth sampling of no more than 5° latitude for at least the majority of GEOTRACES key parameters
  - ▶ Normal stations 1o latitude, super stations ~2-3o of latitude
- Provide measurements of all GEOTRACES key parameters
  - ▶ All confirmed, except  $\delta^{15}\text{N}$ ,  $\delta^{13}\text{C}$
- √ Collect sufficient ancillary data to allow interpretation of the TEI data
  - ▶ Full physical oceanography section following GO-SHIP guidelines
- √ Follow GEOTRACES Intercalibration procedures
  - ▶ Cross-over, intercalibration and RM quality checks
- √ Follow GEOTRACES Data Management protocols (includes metadata submission, data submission to GDAC, public data access)
  - ▶ Pre-cruise metadata to be submitted late 2017
- √ PIs must contact GDAC regarding crossover stations
  - ▶ Done
- √ PIs must commit in advance to acknowledging GEOTRACES
  - ▶ Done